

THURSDAYS - NORDIC NIGHT AT LAPHAM PEAK

January 7, 21, 28, and February 4, 11

Lapham Peak is the premiere location for cross country skiing in Southeast Wisconsin for many reasons, including 5 km of lighted trails, of which 1.2 km are served by snowmaking. Weeknights at the Peak are alive with activity, with the Peak Nordic Kids on Monday, lessons on Tuesday, and adult and high school racing on Wednesday. This year, we are designating Thursdays as Nordic Ski Club Night. January dates are the 7th, 21st and 28th. The event will be very informal – show up when you feel like it – meet your friends in the Evergreen Shelter – head out and stride or skate a couple of loops around the lighted or snowmaking trails -- then around 7:30 to 8 pm, come back to the shelter building to have refreshments with the group. Bring something simple to share – your beverage of choice, and an easy snack. No advanced sign-up is required, but if you have questions or suggestions, contact John McCarthy at (262) 549-3604.

Directions: Lapham Peak is one mile south of I-94 on County Hwy C at the Delafield exit. You will need a 2010 State Park Sticker for your vehicle (annual \$25; daily \$7) and a 2010 State Trail Pass for each skier (annual \$20; daily \$4), which can be purchased at the Lapham Peak entrance station. Lines can be long at the entrance station, so arrive early.

SKI THE NORTHERN KETTLE MORAINE

Saturday, January 16

Join your fellow Nordics for a local ski outing. We will plan on skiing at Greenbush or Zellmer trails, depending on conditions, and then stopping for food and beverages afterwards. Both trails have striding and skating available and do not require a ski pass. There are outdoor toilets available, but only Greenbush has a warming hut. We will meet at the Jackson Park and Ride at 9 am and carpool from there.

Directions: Take Hwy 45 North to the Jackson /Hwy 60 exit and go right. Take another right at the stoplight (Hwy P). The Park & Ride is on the left side of the road. You will need a State Park admission sticker for your vehicle. Please RSVP Nancy at nlzoltowski@gmail.com or (414) 254-0523.



LAPHAM SKI LESSONS, WINTER PICNIC AND CANDLELIGHT SKI

Saturday, January 9

Hone your skiing skills and enjoy a nice, relaxing picnic at Lapham Peak in Delafield. Meet at 10 am at the Homestead Hollow area for skiing lessons from club instructors. Lessons are free and open to the public, so you are encouraged to invite future members to try skiing and learn about our club. Wheel & Sprocket may rent skis at a small building along the road that leads you to the Evergreen Shelter; call ahead for hours and ski availability, (262) 646-6300. Please contact Carol Doebler at tortoiseski@wi.rr.com with questions about the lessons.

At 12 noon, a winter picnic will be held for NSCM members at Trecker Lodge near the Homestead Hollow parking lot. The club will provide your lunch – IF you make a reservation by Wednesday, January 6 with Rita Keber at (262) 547-4827.

From 6 to 9 pm, there is a public Candlelight Ski/Hike starting at Trecker Lodge. Ice-skating may be available, weather permitting.

Directions: Kettle Moraine State Forest-Lapham Peak Unit is one mile south of I-94 on County Hwy C at the Delafield exit. You will need a 2010 State Park Sticker for your vehicle (annual \$25; daily \$7) and a 2010 State Trail Pass for each skier (annual \$20; daily \$4), which can be purchased at the Lapham entrance station. Lines can be long at the entrance, so arrive early.

SNOWSHOE HIKE

Sunday, January 17

Take time out of your busy life to explore on snowshoes (hike if no snow) the trails of a quiet woodlot on the southwest side of Milwaukee. Meet at 10 am in the parking lot of the Whitnall Park golf course located on 92nd street in Hales Corners. The southeast side of the lot is across from the Ross Lodge woods. Plan to shoe or hike 4-5 miles. Contact event leader Barbara Johnson (414) 762-0741 if you have any questions.

T'HINK SNOW!!!

SKI FOR LIGHT GUIDES NEEDED

Friday, January 15 - Sunday, January 17

The Wisconsin Ski for Light program is looking for volunteers to guide blind and visually impaired skiers on cross country skis at the Lions Camp near Rosholt, Wisconsin. It is a wonderful weekend of fun in a beautiful area. It's heartwarming and gratifying to show people the wonders of skiing. Most blind people don't get much of a chance to enjoy winter so they really look forward to Ski for Light. We go skiing, snow shoeing and tubing in a beautiful wooded area. Don't feel that you need to be an expert skier, just be comfortable on skis. In case there is no snow, they have Cat Skis. Training is provided for the guides.

The Sons of Norway sponsor the event. There is no cost to the guides who volunteer for the weekend of Friday, January 15 to Sunday, January 17. If interested, contact Nordic member Jim Walsh at (414) 228-8229. We could either take the group bus from Madison or carpool straight to Rosholt which is just 2 1/2 hours from Milwaukee.

The number of blind skiers depends on the number of sighted skiers who are guides. So please consider volunteering for this fun event. As of this printing they need an additional 5 people. For more information, you can visit www.wiskiforlight.org or contact the Ski for Light coordinator Mike Graper at getgraper@gmail.com.

MILWAUKEE ADMIRALS HOCKEY GAME

Friday, January 29

The penalty period is over and the teams are back to equal strength. "THAT'S DEBATABLE" Join the Nordics for an Admirals Hockey game on January 29. They play division rivals the Houston Aeros. For just \$16 you get a Mid-Deck Ticket, a concert and a kazoo! You gotta have a kazoo. The Admirals games are great fun with awesome fan participation. Email Katie Bivens, katiebivens@sbcglobal.net to reserve your tickets now! Reservations have to be made by January 22 and we need 10 people to get the discounted rate. Concert? Yep, Blake Shelton is playing right after the game!

NORDIC TRAIL SKI OR HIKE

Sunday, January 31

Ski the trail that's named for the Nordic Ski Club of Milwaukee: the Nordic Trail in the Southern Unit of the Kettle Moraine State Forest. This lovely system of cross-country ski trails is about an hour's drive from Milwaukee. Designed by a member of the Nordic Ski Club back in the 1970s, the trail system has options for different levels of skiing. If there's snow, ski with us here on Sunday afternoon. There's a nice warming lodge and outdoor restrooms. If the snow is better at another location, we will go there or, if there's no snow, we'll hike. Our outing starts at 1 pm on January 31, led by Paula Brookmire. Please call her at (414) 527-0040 Saturday evening or by 10 am Sunday to confirm the ski or hike location (the place may change depending on snow-mud conditions). Also, let her know if you are coming and if you want to carpool (11:50 am) or meet us there at 1 pm.

NORDIC PHOTO GALLERY

ABR Trails - Ironwood, MI

December 11-13



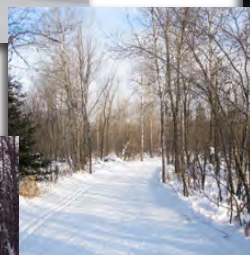
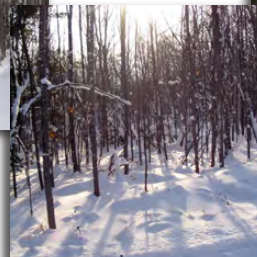
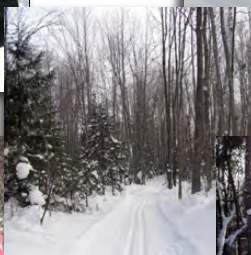
Ann Rozanski, Jim Zimmerman



Mary Lucas



Sandy Sugden, Anne Riendl
Arlene Wisotzke



Beth Donnelly, Katie Bivens
Gelaney Wyder

Photos kindly submitted by Paula Brookmire and Beth Donnelly